



SPEEDCHECKER

USER EXPERIENCE ON MOBILE NETWORKS



Chad

December 2021

ABOUT THE DATA

Total number of samples: 38,730

Total number of unique devices: 12,104

Data collection period: 15 December - 31 December 2021

ABOUT THE REPORT

SpeedChecker aims to benchmark operators on the user experience and, therefore, the metrics in this report are designed with this in mind. Users accessing the services on the Internet are affected not only by the quality of the radio access network but also by other factors such as the mobile device performance, network backhaul capacity and interconnections to other networks.

Our [methodology](#) is designed to take into account all of those factors. Our metrics do not show the highest possible speeds or the lowest latencies that a particular operator can provide locally. The majority of the content accessed on the Internet is on CDNs and that is why SpeedChecker uses CDNs to perform the tests. Operators who have great radio access network as well as great connections to CDNs offer superior user experience and score better in our reports.

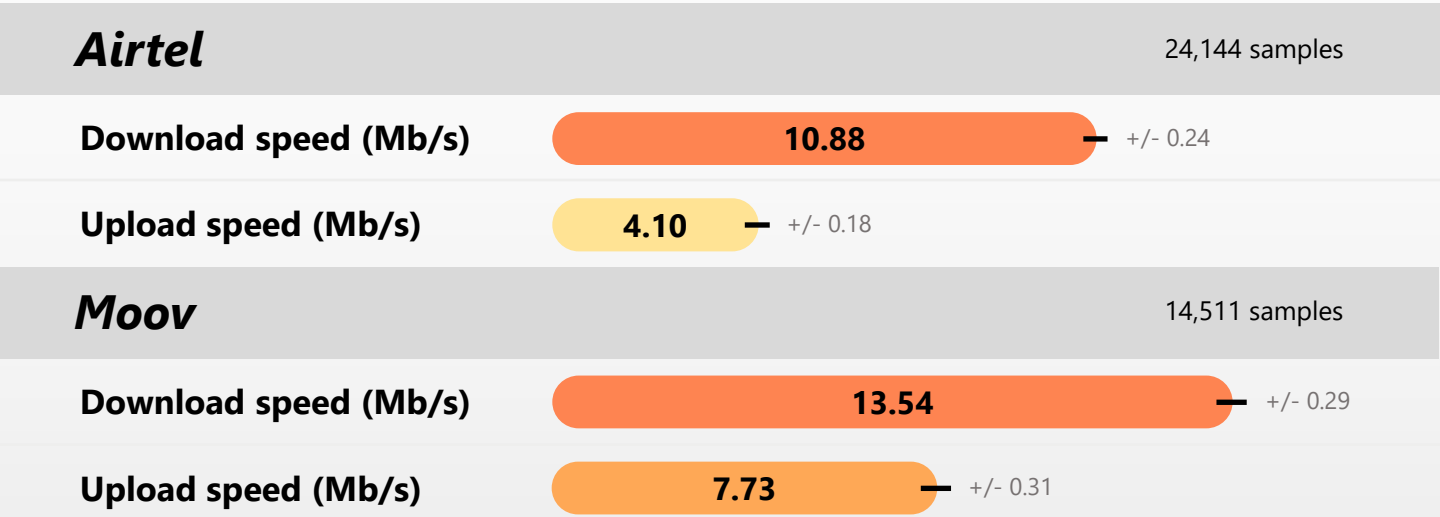


MNO SPEED BENCHMARK

The following table shows average download and upload speeds per MNO.

The measurements were made across the whole country and across the whole spectrum of available Radio Access Technologies (3G, 4G, 5G if available).

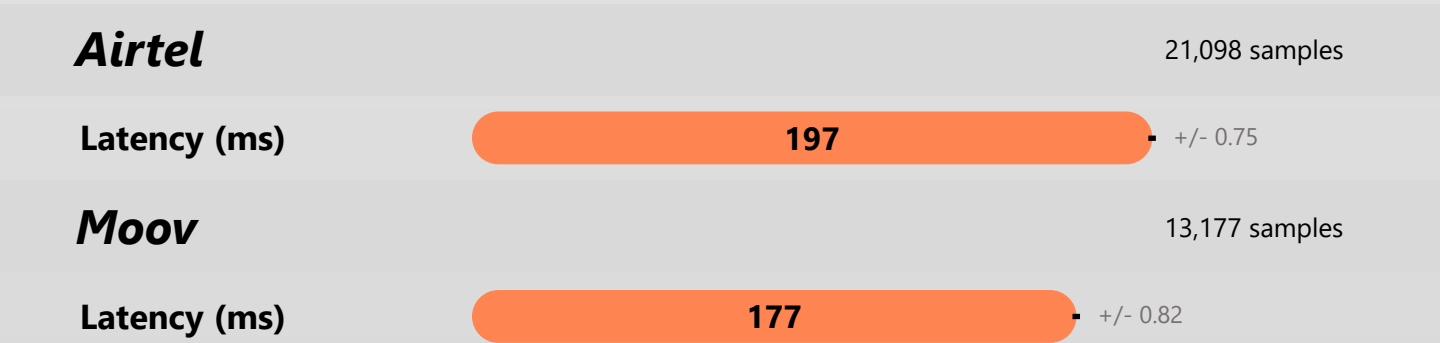
95% Confidence interval



MNO LATENCY BENCHMARK

As described in our [data collection methodology](#), latency is measured to the CDN endpoints. Operators who interconnect with CDNs well tend to offer better user experience in latency-sensitive applications as well as score well in our latency comparison.

95% Confidence interval



MNO COVERAGE BENCHMARK

Our mobile coverage benchmark compares MNO coverage footprint (where our devices detected MNO's presence) and availability of different RAT in those locations. Operators with a large footprint and with a good 4G coverage will score higher on the Mobile Coverage benchmark.

Separately, we also report 4G Mobile Coverage which looks at 4G technology only (and does not reflect 2G or 3G coverage in the calculation).

Data collection period: 1 Jan - 31 Dec 2021

Airtel

260,000 samples

Mobile Coverage

344

4G Mobile Coverage

148

Moov

170,000 samples

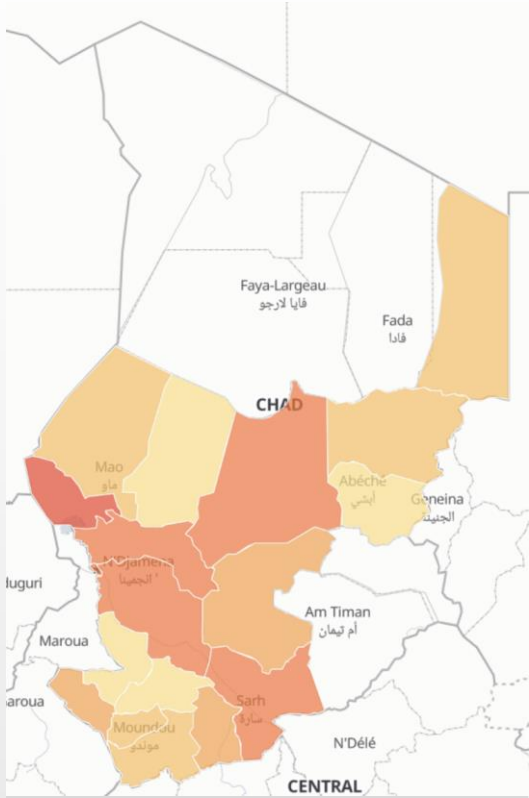
Mobile Coverage

270

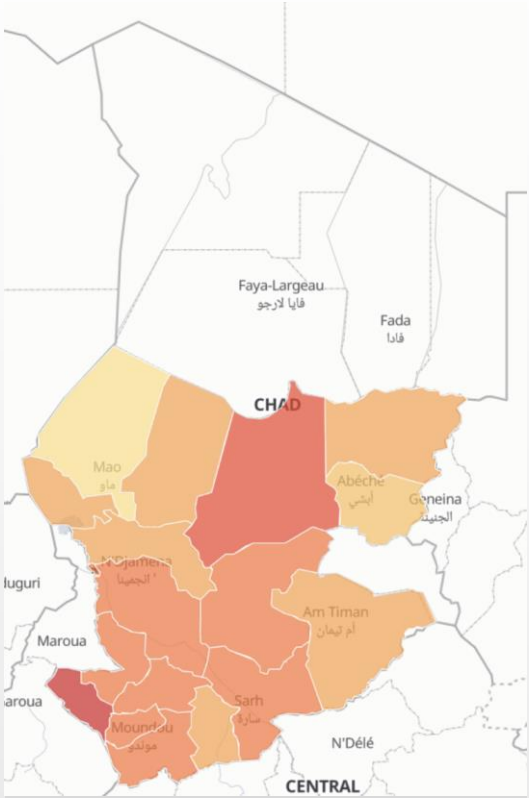
4G Mobile Coverage

146

REGIONAL COMPARISON OF MNO DOWNLOAD SPEED PERFORMANCE

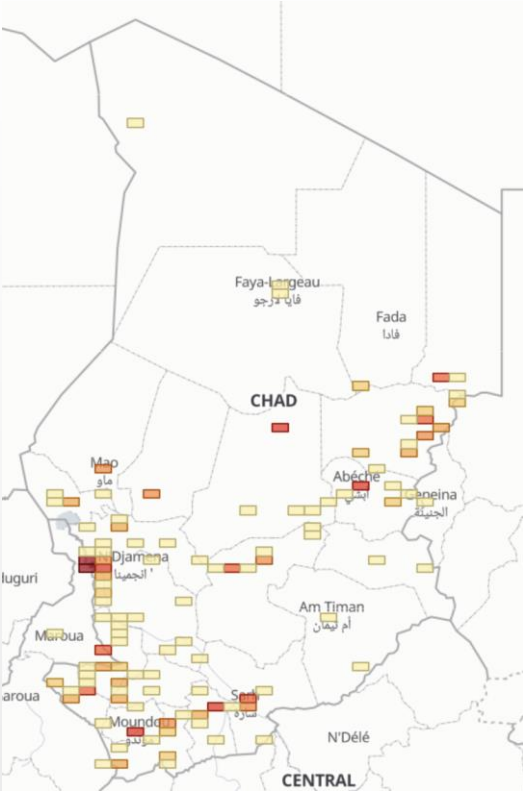


Airtel

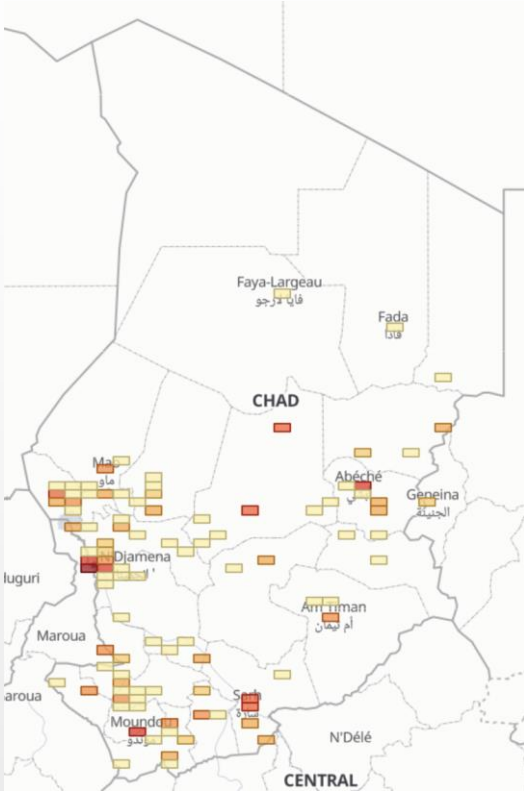
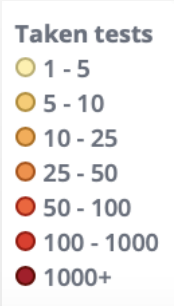


Moov

MEASUREMENT SAMPLES DISTRIBUTION



Airtel



Moov

AVERAGE DOWNLOAD SPEEDS IN DIFFERENT REGIONS OF CHAD

The following table shows the average download speeds in different regions of Chad. The 2nd column is an average of all MNOs in a particular region.

The fastest regions are at the top of the table measured in Mb/s.

REGION	ALL OPERATORS	AIRTEL	MOOV	TEST COUNT #
Moyen-Chari	13.59	11.017	14.639	326
Ville de N'Djamena	12.868	12.32	13.493	22,691
Mayo-Kebbi Ouest	12.513	7.291	24.881	155
Chari-Baguirmi	11.709	10.26	14.405	923
Batha	11.3	10.27	16.073	9,018
Lac	10.555	17.943	9.851	184
Hadjer-Lamis	10.319	12.958	7.736	122
Guéra	9.419	9.312	14.633	1,586
Mandoul	9.278	9.316	7.798	1,808
Logone Oriental	8.338	6.536	10.573	445
Tandjilé	8.211	4.53	12.4	80
Salamat	7.545	-	7.545	40
Mayo-Kebbi Est	7.371	4.917	13.005	204
Logone Occidental	7.257	6.26	11.327	167
Wadi Fira	6.524	6.118	9.266	169
Barh el Ghazel	5.961	3.996	7.851	61
Ouaddaï	5.633	4.579	6.857	480
Ennedi Est	5.624	5.624	-	88
Kanem	5.041	5.254	4.789	90
Borkou	-	-	-	-
Ennedi Ouest	-	-	-	-
Tibesti	-	-	-	-
Sila	-	-	-	-

DOWNLOAD SPEED (Mb/s)

AFRICAN BENCHMARK

— 95% Confidence interval

Morocco

147,819 samples

23.57

+/- 0.17

South Africa

62,294 samples

19.20

+/- 0.20

Tunisia

59,133 samples

18.19

+/- 0.22

Mali

55,509 samples

15.76

+/- 0.21

Malawi

36,443 samples

13.71

+/- 0.19

Botswana

19,537 samples

13.56

+/- 0.30

Madagascar

18,300 samples

13.24

+/- 0.29

Mauritius

66,452 samples

12.80

+/- 0.13

Sierra Leone

78,339 samples

11.87

+/- 0.15

Chad

38,730 samples

11.86

+/- 0.19

Nigeria

69,393 samples

11.55

+/- 0.13

Kenya

137,495 samples

10.66

+/- 0.07

Mozambique

63,979 samples

9.67

+/- 0.12

Senegal

57,011 samples

9.56

+/- 0.13

Angola

119,175 samples

9.52

+/- 0.09

Egypt

222,590 samples

9.48

+/- 0.06

Togo

68,583 samples

9.39

+/- 0.14

Burkina Faso

70,384 samples

9.35

+/- 0.12

↓ Continue on the next page ↓



SPEEDCHECKER

DOWNLOAD SPEED (Mb/s)

AFRICAN BENCHMARK

— 95% Confidence interval

Zambia 85,403 samples	9.03	+/- 0.10
Ethiopia 25,864 samples	8.75	+/- 0.21
DR Congo 118,992 samples	7.80	+/- 0.06
Uganda 65,345 samples	7.55	+/- 0.09
Guinea 35,637 samples	7.46	+/- 0.14
Ghana 71,333 samples	7.42	+/- 0.09
Ivory Coast 71,312 samples	7.18	+/- 0.10
Zimbabwe 138,872 samples	7.12	+/- 0.06
Tanzania 203,547 samples	6.95	+/- 0.05
Cameroon 68,677 samples	6.78	+/- 0.09
Niger 60,188 samples	6.70	+/- 0.10
Benin 51,507 samples	6.28	+/- 0.12
Algeria 430,861 samples	5.40	+/- 0.03
Libya 98,808 samples	4.28	+/- 0.05

ARE YOU LOOKING FOR MORE DETAILED CROWDSOURCED DATA IN CHAD?

What you see in this free report is a high-level snapshot of the crowdsourced data we offer to our clients.

Our crowdsourcing system contains billions of data points collected from mobile devices worldwide.

Unlike our competitors, we can sell access to the data with different granularity: Our clients can pick data they need with significant cost savings associated with a reduced scope.

CONTACT US FOR MORE INFORMATION



FLEXIBILITY IS IN OUR DNA

Our customers value our flexible and modular approach in delivering our solutions. There is no one size fits all in providing crowdsourcing projects. Customers increasingly require tailored solutions which will satisfy all technical, operational and legal requirements.



With reduced scope comes reduced price. Our Basic KPI set is a more cost effective way to get speed test data. Our Advanced KPI set is more comprehensive with 100+ active and passive KPIs.



Crowdsourcing is about trade-offs. Do you want more tests or do you want tests to run longer ? Do you want to collect data passively without impacting the network and user bandwidth or run active tests which will stress and assess the capacity better?



Do you want us to host the solution for fast & easy deployment or do you require data to be within your data center for compliance purposes?

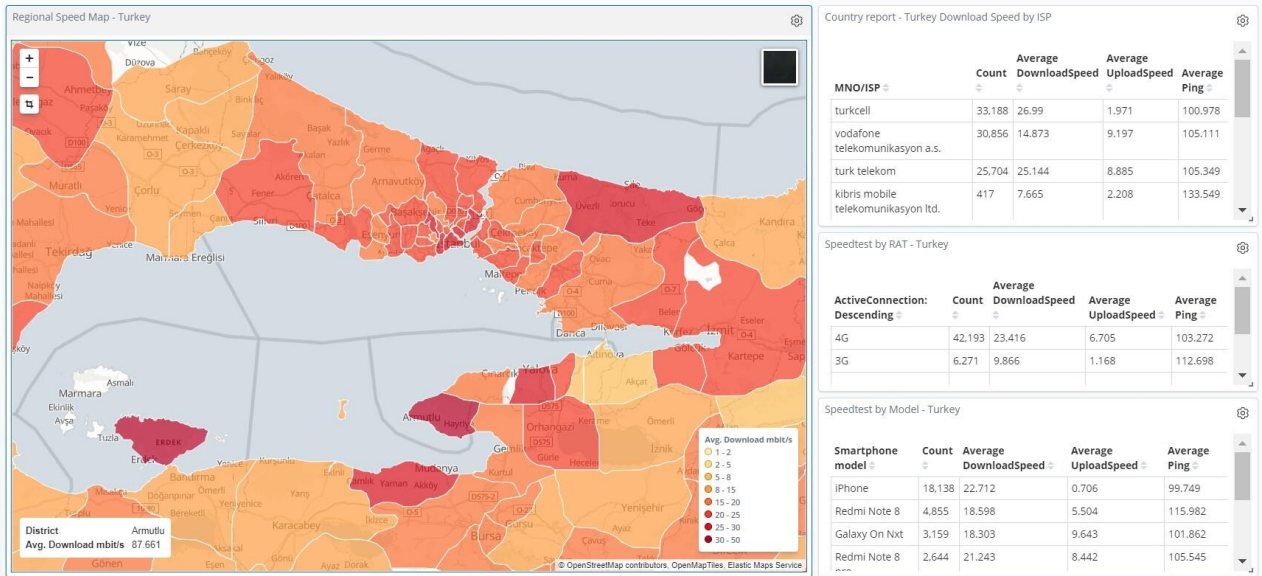


You not only want the data but you also want your own app or web-based tester? We can do it all. Our team can produce iOS, Android, HTML, Windows and MAC clients tailored to your specific needs.

 **[CONTACT US FOR MORE INFORMATION](#)**

BASIC CROWDSOURCING SYSTEM

Our Basic Crowdsourcing System offers full analytical options like our Advanced system but with the limitation of a smaller Basic KPI set.



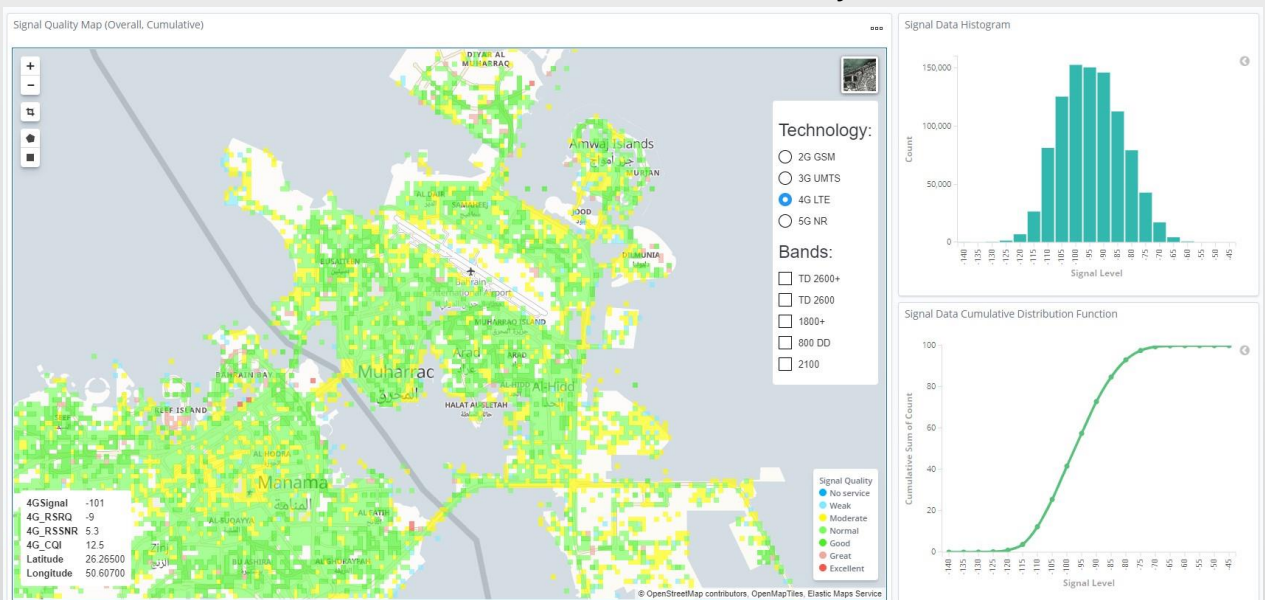
Internet Speeds

[See Full Screen image](#)

Basic KPIs include speed test data along with device and network information but do not contain Streaming Video, detailed Radio KPI's nor passive measurements.

ADVANCED CROWDSOURCING SYSTEM

Step up from our Basic system to our Advanced Crowdsourcing system with more than 100+ KPIs to analyse



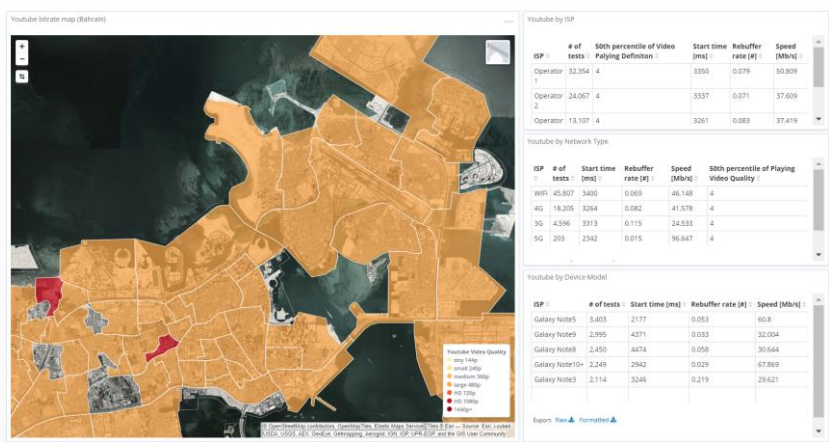
Coverage Analysis

[See Full Screen image](#)

- Statistical research on the basis of millions of crowdsourced samples
- Multiple signal metrics RSRP, RSRQ, SNR, RSSI, CQI
- Split by MNO, Radio Access Type, Band (down to individual ARFCN)
- Possibility to filter by: Speed (e.g. High Speed Scenario) and Indoor



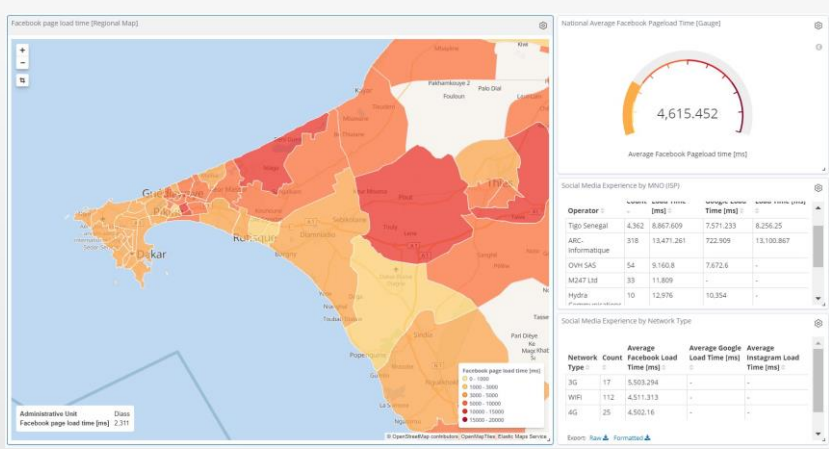
ADVANCED CROWDSOURCING SYSTEM



YouTube Quality

YouTube quality dashboard provides information about YouTube regional performance. It features metrics such as YouTube playing definition, buffering time, start delay.

[See Full Screen image](#)



Social Media Experience

Social media experience dashboard shows regional performance of major social media platforms such as Facebook, Google and Twitter.

[See Full Screen image](#)

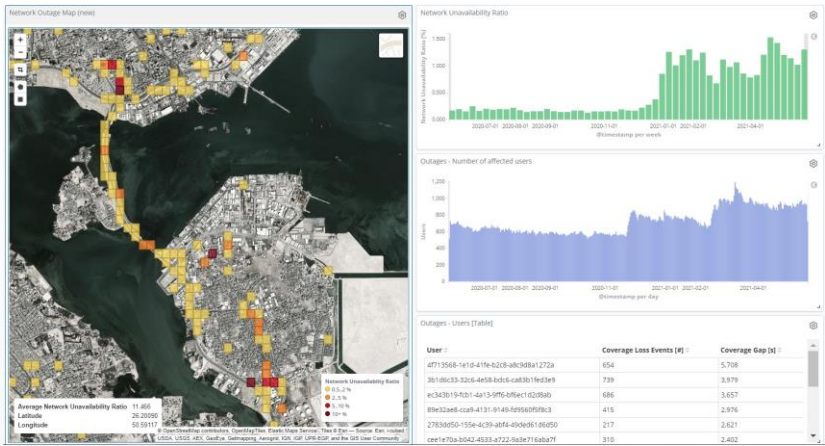


Point of Interest Performance

Reveals Internet performance in specific important locations such as Airports, Malls, Stadiums and other places located outside of drive test routes.

[See Full Screen image](#)

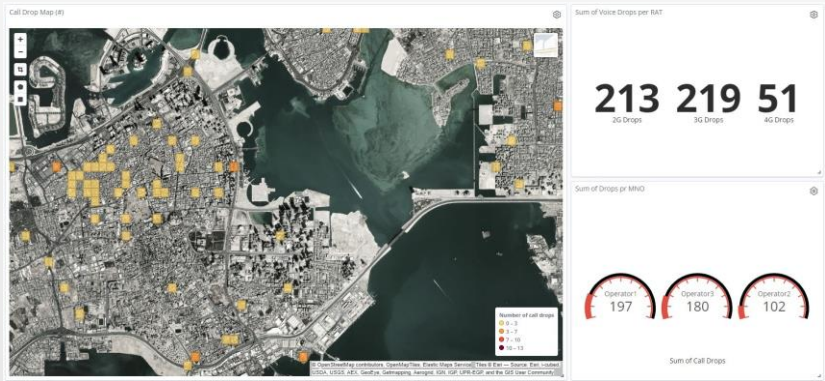
ADVANCED CROWDSOURCING SYSTEM



Outages

Network Availability is the number one metric for any network. While OSS data provides overall information, crowdsourcing is able to spot exact locations where subscribers are not able to attach to the network.

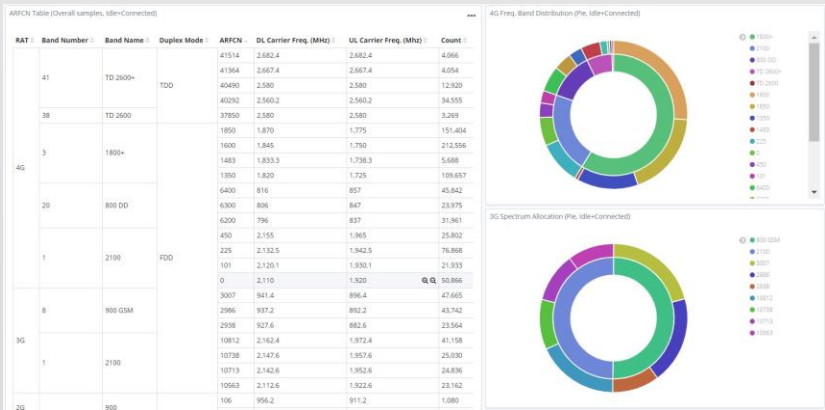
[See Full Screen image](#)



Voice Quality

The Voice Quality dashboard shows the user issues visualized on a map to spot any areas where users are making calls and their quality is not satisfactory or where calls are being dropped.

[See Full Screen image](#)



Spectrum Usage

Spectrum utilization dashboard allows the monitoring of how the available spectrum is used in various locations. It may reveal the load balancing situation or the fact that individual band are overloaded or unloaded.

[See Full Screen image](#)

DATA COLLECTION METHODOLOGY

Our data is collected from end user devices running Android and iOS systems. All measurements are executed towards a CDN that has a large geographical footprint and hosts a significant part of the content that is being accessed by the users. This ensures our results are a good approximation of the user's actual quality of experience.

All measurements must contain accurate location information using GPS or wi-fi geolocation methods. Measurements are considered only from the apps that have been approved by SpeedChecker. Submitted measurements are checked to see if they are within expected ranges and additional security precautions are implemented to ensure measurement data is not being manipulated.

The data collection process aims to deliver a single measurement sample from every device in our crowdsourcing system device pool and we strive to remove all duplicates. Due to privacy settings on some users phones we cannot reliably detect unique devices therefore some devices have contributed to more than 1 measurement into this dataset.

MEASUREMENT METHODOLOGY

The methodology is based on the concept of the [ITU-T Q.3960 \(2016\)](#) "Framework of Internet related performance measurements" and "Supplement 71 to ITU-T Q-series Recommendations".

This test methodology aims at delivering an accurate measurement of the maximum bandwidth available over a given internet connection. This is achieved by transferring multiple parallel data streams over separate TCP connections within a predefined amount of time. The transferred data consists of randomly generated data with high entropy.

#	Parameter	Unit	ITU Range	Current Setting
1	Number of parallel threads	#	$1 \leq n \leq 10$	Dynamic addition from 1 to 10
2	Duration of pre-test	s	$0 \leq T_p \leq 5$	1s
3	Duration of the downlink test	s	$5 \leq T_d \leq 15$	5s
4	Duration of the uplink subtest	s	$5 \leq T_u \leq 15$	5s
5	Number of 'pings' during delay subtest	#	$5 \leq p \leq 20$	$p = 10$